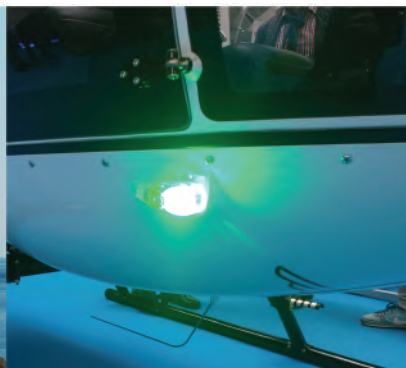
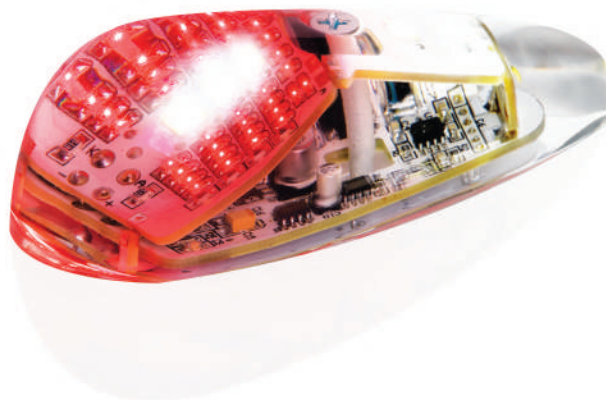
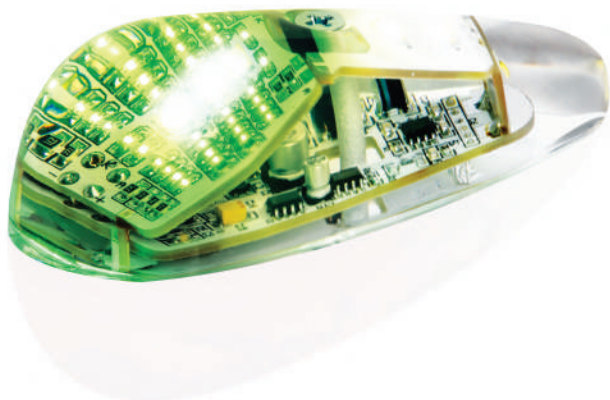




Innovative LED lighting system for all types of aircraft



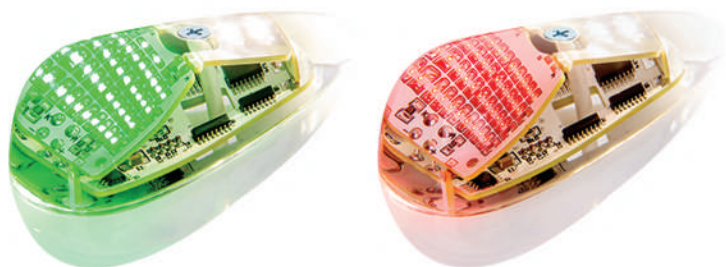
www.AvioLights.com



AvioLights is a polish manufacturer of aviation LED lighting system.

- Navigation lights, position lights, strobe/anticollision lights, beacon and landing lights
- Innovative and highly performing aircraft LED lights used in many airplanes, gyrocopters, helicopters and UAVs
- Supply of our products for aircraft manufacturers and individuals
- Special support and individual approach for all our customers to meet their needs

Innovative LED lighting system for all types of aircraft



Navigator Ultra 360

Wingtip LED Navigation / Position / Strobe lights

Navigator Ultra 360 wingtip lights are navigation lights (red & green) with integrated rear position light (white), equipped with synchronized strobe light. The lights have strobe light controller integrated in the lamp capsule. The installation and connection process is very easy and there is no need for additional external strobe controllers. You simply connect all the wiring directly to the lamp.

Find below features of this model to fulfill your needs entirely

	NAVIGATOR ULTRA 360
NAVIGATION LIGHT (RED/GREEN)	☑
REAR POSITION LIGHT (WHITE)	☑
STROBE	☑
11,8-14,8V VOLTAGE	☑
SYNCHRONIZATION	☑



ALL ELECTRONICS INTEGRATED



WATER, DUST AND SHOCK PROOF



RADIO INTERFERENCE-FREE



LOW POWER CONSUMPTION



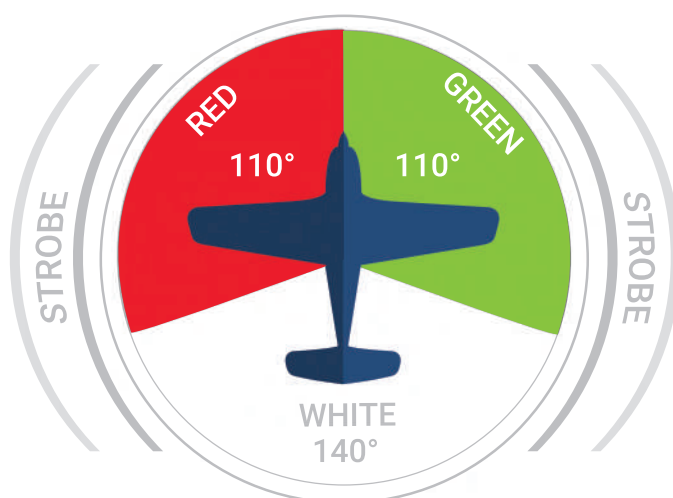
11,8V-14,8V VOLTAGE RANGE



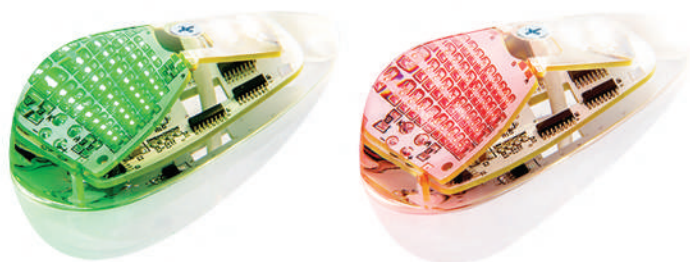
STROBE SYNCHRO

Technical Data

Navigation lights	YES (red/green)
Rear position light	YES (white)
Strobe light	YES (white)
Voltage range	11,8 V - 14,8 V
Weight (2 lamps)	170 g
Operation temperature range	-35°C to +60°C
Current - navigation light (2 lamps)	0,5 A
Current - strobe light (2 lamps)	3,2 A in peak
Input power - navigation light (2 lamps)	4,5 W
Input power - strobe light (2 lamps)	45 W in peak
Navigation light angle	110°
Rear position light angle	140°
Nav/Pos light luminosity (per lamp)	450 lm
Strobe light luminosity (per lamp)	2000 lm
Encapsulation	Monolith of UV resistant epoxy resin
Strobe control unit	Lamp built in
Reverse polarity protection	YES



Innovative LED lighting system for all types of aircraft



Navigator Ultra

Wingtip LED Navigation / Strobe lights

Navigator Ultra wingtip lights are navigation lights (red & green) equipped with synchronized strobe (white) light. Monolith encapsulation ensures that the lamp is water and vibration resistant. The lights have strobe light controller integrated in the lamp capsule. The installation and connection process is very easy and there is no need for additional external strobe controllers. You simply connect all the wiring directly to the lamp.

Find below features of this model to fulfill your needs entirely

	NAVIGATOR ULTRA
NAVIGATION LIGHT (RED/GREEN)	☑
REAR POSITION LIGHT (WHITE)	
STROBE	☑
11,8-14,8V VOLTAGE	☑
SYNCHRONIZATION	☑



ALL ELECTRONICS INTEGRATED



WATER, DUST AND SHOCK PROOF



RADIO INTERFERENCE-FREE



LOW POWER CONSUMPTION



11,8V-14,8V VOLTAGE RANGE



STROBE SYNCHRO

Technical Data

Navigation lights	YES (red/green)
Strobe light	YES (white)
Voltage range	11,8 V - 14,8 V
Weight (2 lamps)	170 g
Operation temperature range	-35°C to +60°C
Current - navigation light (2 lamps)	0,5 A
Current - strobe light (2 lamps)	3,5 A in peak
Input power - navigation light (2 lamps)	4,0 W
Input power - strobe light (2 lamps)	45 W in peak
Navigation light angle	110°
Nav/Pos light luminosity (per lamp)	450 lm
Strobe light luminosity (per lamp)	2000 lm
Encapsulation	Monolith of UV resistant epoxy resin
Strobe control unit	Lamp built in
Reverse polarity protection	YES



Innovative LED lighting system for all types of aircraft



Navigator

Wingtip Navigation lights

Navigator wingtip lights are navigation lights (red & green). Monolith encapsulation ensures that the lamp is water and vibration resistant. Lights are much brighter comparing to traditional bulb lights. Moreover the required input power for the LED lights is lower and does not affect much the overall electric load of your aircraft. The lights are the most cost effective model of our products.

Find below features of this model to fulfill your needs entirely

	NAVIGATOR
NAVIGATION LIGHT (RED/GREEN)	<input checked="" type="checkbox"/>
REAR POSITION LIGHT (WHITE)	<input type="checkbox"/>
STROBE	<input type="checkbox"/>
12-28V VOLTAGE	<input checked="" type="checkbox"/>
SYNCHRONIZATION	<input type="checkbox"/>



ALL ELECTRONICS INTEGRATED



WATER, DUST AND SHOCK PROOF



RADIO INTERFERENCE-FREE



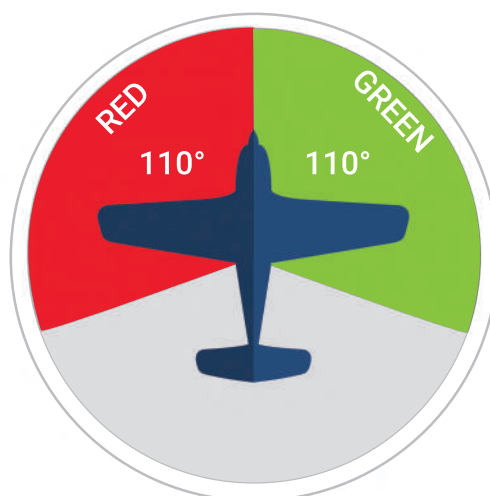
LOW POWER CONSUMPTION



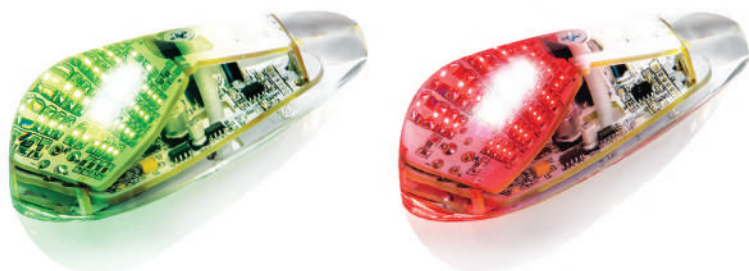
12V - 28V VOLTAGE RANGE

Technical Data

Navigation lights	YES (red/green)
Strobe light	NO
Voltage range	12 V - 28 V
Weight (2 lamps)	150 g
Operation temperature range	-35°C to +60°C
Current - navigation light (2 lamps)	0,4 A
Input power - navigation light (2 lamps)	5,0 W
Navigation light angle	110°
Navigation light luminosity (per lamp)	450 lm
Wiring requirement	0,5 mm2 cable
Encapsulation	Monolith of UV resistant epoxy resin
Reverse polarity protection	YES



Innovative LED lighting system for all types of aircraft



Sky Nav

Wingtip LED Navigation / Strobe lights / 22-28V

Sky Nav wingtip lights are navigation lights (red & green), equipped with strobe light. The lights have synchronized strobe light controller integrated in the lamp capsule. The installation and connection process is very easy and there is no need for additional external strobe controllers. You simply connect all the wiring directly to the lamp. What is more, the lights can be powered with wide range of voltage.

Find below features of this model to fulfill your needs entirely

	SKY NAV
NAVIGATION LIGHT (RED/GREEN)	☑
REAR POSITION LIGHT (WHITE)	
STROBE	☑
22-28V VOLTAGE	☑
SYNCHRONIZATION	☑



ALL ELECTRONICS INTEGRATED



WATER, DUST AND SHOCK PROOF



RADIO INTERFERENCE-FREE



LOW POWER CONSUMPTION



22V-28V VOLTAGE RANGE



STROBE SYNCHRO

Technical Data

Navigation lights	YES (red/green)
Strobe light	YES (white)
Strobe light synchronization	YES
Voltage range	22 V - 28 V
Weight (2 lamps)	175 g
Operation temperature range	-35°C to +60°C
Current - navigation light (2 lamps)	0,2 A
Current - strobe light (2 lamps)	2,2 A in peak
Input power - navigation light (2 lamps)	4,2 W
Input power - strobe light (2 lamps)	57 W in peak
Navigation light angle	110°
Rear position light angle	140°
Nav/Pos light luminosity (per lamp)	450 lm
Strobe light luminosity (per lamp)	3000 lm
Encapsulation	Monolith of UV resistant epoxy resin
Strobe control unit	Lamp built in
Reverse polarity protection	YES



Innovative LED lighting system for all types of aircraft



Sky Nav 360

Navigation / Position / Strobe lights / 22-28V

Sky Nav360 wingtip lights are navigation lights (red&green) with integrated rear position light, equipped with strobe light. The lights have synchronized strobe light controller integrated in the lamp capsule. The installation and connection process is very easy and there is no need for additional external strobe controllers. You simply connect all the wiring directly to the lamp. What is more, the lights can be powered with wide range of voltage.

Find below features of this model to fulfill your needs entirely

	SKY NAV 360
NAVIGATION LIGHT (RED/GREEN)	☑
REAR POSITION LIGHT (WHITE)	☑
STROBE	☑
22-28V VOLTAGE	☑
SYNCHRONIZATION	☑



ALL ELECTRONICS INTEGRATED



WATER, DUST AND SHOCK PROOF



RADIO INTERFERENCE-FREE



LOW POWER CONSUMPTION



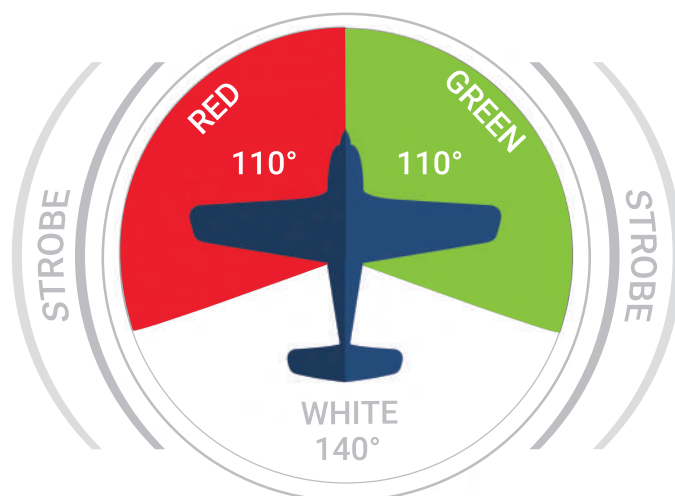
22V-28V VOLTAGE RANGE



STROBE SYNCHRO

Technical Data

Navigation lights	YES (red/green)
Rear position light	YES (white)
Strobe light	YES (white)
Strobe light synchronization	YES
Voltage range	22V - 28V
Weight (2 lamps)	175 g
Operation temperature range	-35°C to +60°C
Current - navigation light (2 lamps)	0,3 A
Current - strobe light (2 lamps)	2,6 A in peak
Input power - navigation light (2 lamps)	4,2 W
Input power - strobe light (2 lamps)	40 W in peak
Navigation light angle	110°
Position light angle	140°
Nav/Pos light luminosity (per lamp)	450 lm
Strobe light luminosity (per lamp)	3100 lm
Encapsulation	Monolith of UV resistant epoxy resin
Strobe control unit	Lamp built in
Reverse polarity protection	YES



Innovative LED lighting system for all types of aircraft



Red Eye

LED Beacon / Recognition light

Red Eye lamp is typical beacon/recognition light, flashing with red light. The installation and connection process is very easy and there is no need for additional external controllers. You simply connect all the wiring directly to the lamp. Monolith encapsulation ensures that the lamp is water and vibration resistant.



ALL ELECTRONICS
INTEGRATED



WATER, DUST
AND SHOCK PROOF



RADIO
INTERFERENCE-FREE



LOW POWER
CONSUMPTION



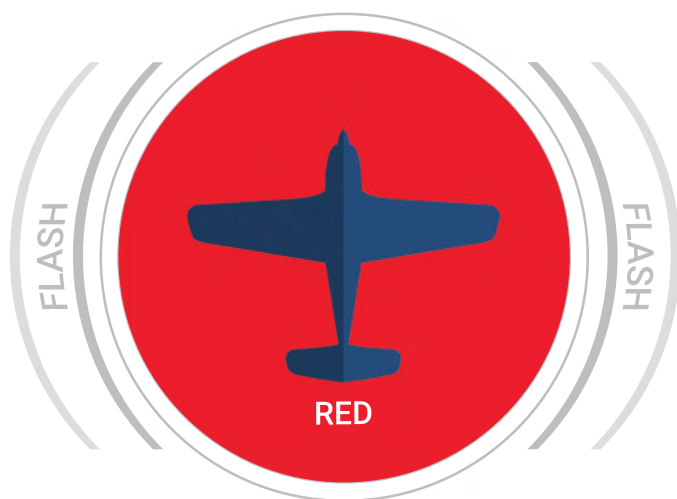
11,8V-14,8V
VOLTAGE RANGE



FLASH SYNCHRO

Technical Data

Beacon light color	RED
Voltage range	11,8 V - 14,8 V
Weight	40 g
Operation temperature range	-35°C to +60°C
Current	2 A in peak
Input power	30 W in peak
Light angle	360°
Luminosity	1000 lm
Flash frequency	100 flashes/min
Encapsulation	Monolith of UV resistant epoxy resin
Flash control unit	Lamp built in
Reverse polarity protection	YES





Tail Star

LED strobe/position light

Tail Star light is position light (white) with strobe feature. The installation and connection process is very easy and there is no need for additional external strobe controllers. You simply connect all the wiring directly to the lamp. Monolith encapsulation ensures that the lamp is water and vibration resistant.

Tail Star can work as:

- position (white) light only
- strobe (white) light only
- position and strobe light at the same time



ALL ELECTRONICS INTEGRATED



WATER, DUST AND SHOCK PROOF



RADIO INTERFERENCE-FREE



LOW POWER CONSUMPTION



ACL



STROBE SYNCHRO



11,8V-14,8V VOLTAGE RANGE

Technical Data

Position light function	YES (white)
Strobe light function	YES (white)
Voltage range	11,8 V - 14,8 V
Weight	40 g
Operation temperature range	- 35°C to + 60°C
Current - position light	0,5 A
Current - strobe light	2 A in peak
Input power - position light	6.5 W
Input power - strobe light	30 W in peak
Position light angle	140°
Position light luminosity	450 lm
Strobe light luminosity	2000 lm
Strobe light frequency	100 flashes/min
Wiring requirement	0,5 mm2 cable
Encapsulation	Monolith of UV resistant epoxy resin
Strobe control unit	Lamp built in
Reverse polarity protection	YES



Innovative LED lighting system for all types of aircraft



Follow Me

LED Landing Light

Follow Me is a landing light (white) which covers all the required spectrum - the terrain and runway ahead during takeoff and landing. The light is very compact and efficient, always ensuring you to have extremely clear visibility. Anodized alluminium encapsulation ensures that the lamp is water and vibration resistant.



ALL ELECTRONICS
INTEGRATED



WATER, DUST
AND SHOCK PROOF



RADIO
INTERFERENCE-FREE



LOW POWER
CONSUMPTION



11V-28V
VOLTAGE RANGE

Technical Data

Voltage range	11V-28V
Dimensions	71mm x 61mm + bracket
Weight	330g
Operation temperature range	- 20°C to + 80°C
Current	2,8 A (13,5 VDC) - 1,4 A (27VDC)
Input power	38W
Light angle (2 lamps)	12° narrow range (per each)
Light angle (1 lamp)	30° wide range
Light luminosity	8000lm
Converter	Built in
Glass type	Plexiglass (6mm, lens system)
Wiring requirement	1mm2 cable
Encapsulation	Anodized alluminium
Reverse polarity protection	YES
Vibration resistance	YES
Water resistance	YES



Innovative LED lighting system for all types of aircraft



Innovative LED lighting system for all types of aircraft

